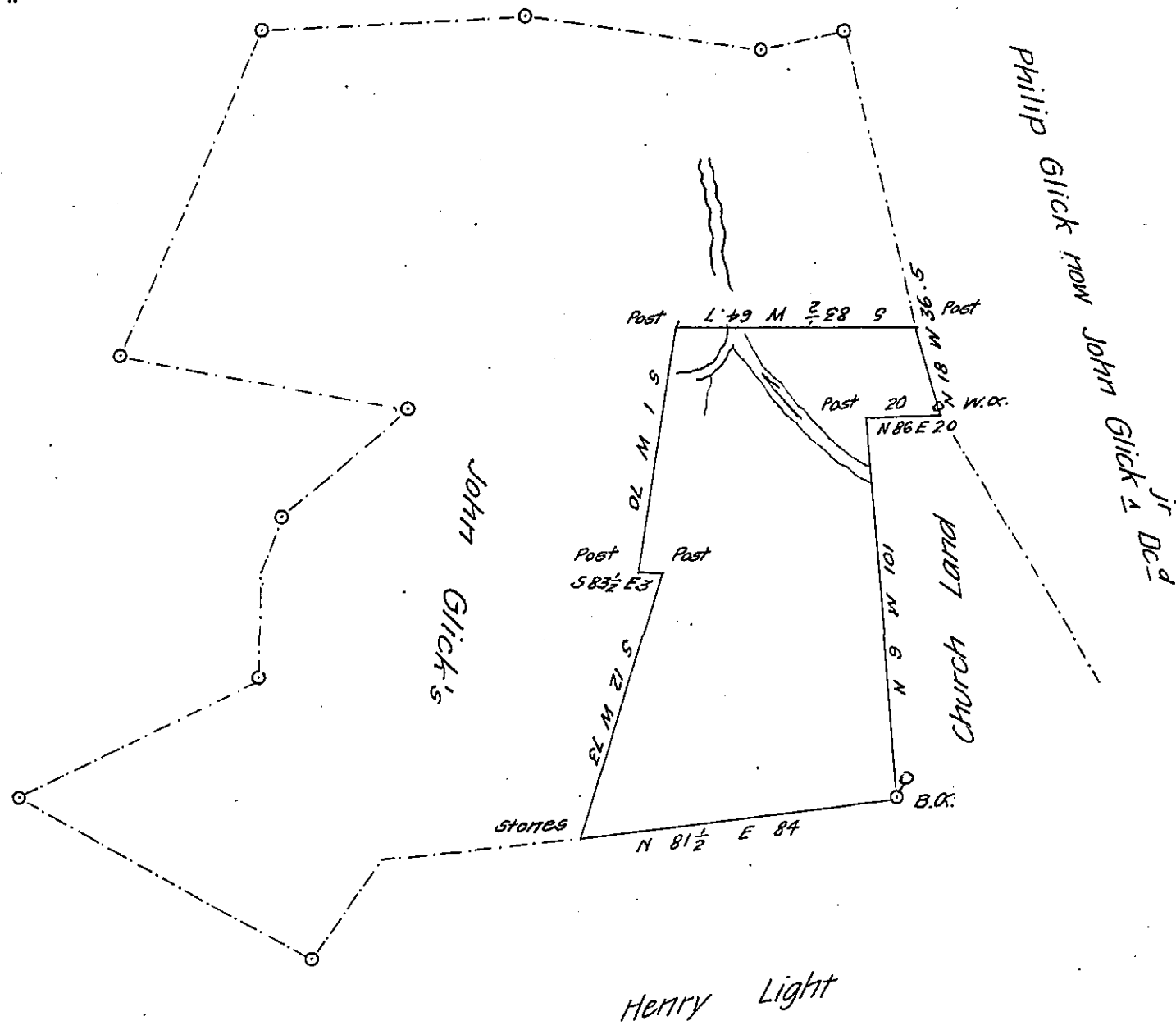


FORM NO 1.



A draft of a tract of land situate in Bethel Township Lebanon County containing fifty two acres and the usual Allowance for Roads &c. It being part of a larger tract of 228^{ac} 112^{ps} & the usual Allowance &c. By Warrant granted to Abraham Weidman dated the 5th day of June 1761 Surveyed by Instance of Henry Glick & Henry Light Executors of the said John Glick Jun^r Dec'd the 25th of Jan^y A.D. 1826

Tobias Kreider Jr.

To Gabriel Hiester Esq^r

D.S.

Surveyor General.

IN TESTIMONY that the above is a copy of the original remaining on file in the Department of Internal Affairs of Pennsylvania, made conformably to an Act of Assembly approved the 16th day of February, 1833, I have hereunto set my Hand and caused the Seal of said Department to be affixed at Harrisburg, this ninth day of September 1907

Henry Howick
Secretary of Internal Affairs.